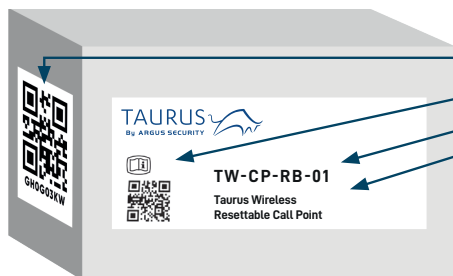


QUICK START GUIDE



THE BOX

- Taurus QR code
- Manual QR code
- Product code
- Product name

INSIDE THE BOX

- 1 x Wireless Resettable Call Point
- 2 x CR123A batteries
- 1 x Reset Key
- Bag with 2 screws, 2 dowels and 2 washers
- 1 x Quick start guide
- 1 x QR code



IMPORTANT TO CONSIDER

When mounting a wireless device a comprehensive radio survey should have been carried out to establish the location that provides the best coverage and optimum reach. Taking into consideration the building structure and materials, the survey identifies the wireless infrastructure required and product locations for optimum performance, identifying any factor that could prevent radio integrity.

Avoid fixing or mounting the unit close to the following:

- Equipment that utilises large electrical currents
- Large metal objects or structures
- Fluorescent lighting fittings
- Metal ceiling structures
- IT cabling.

Keep 2 meters minimum spacing between other wireless equipment in the area to avoid signal interference.



EN54 approved environmental temperature range is -10°C to +55°C

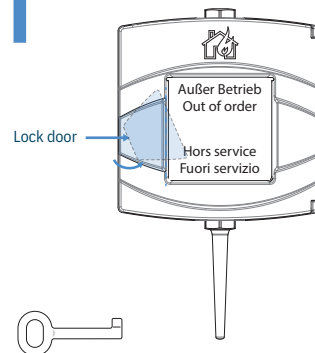
UNBOXING

- When unboxing the MCP you will find the unit with pre-formed mounting holes to ensure ease of drilling
- Screws, dowels and washers are supplied to fix the back box to the wall

MOUNTING STEPS

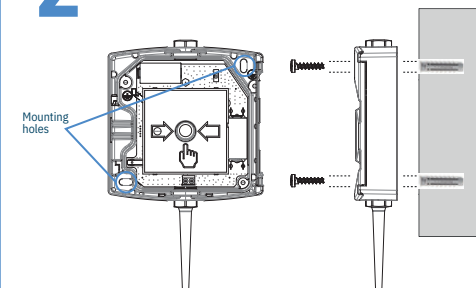
Proceed as follows to complete the device installation. This applies to the first power on, otherwise refer to the installation manual.

1



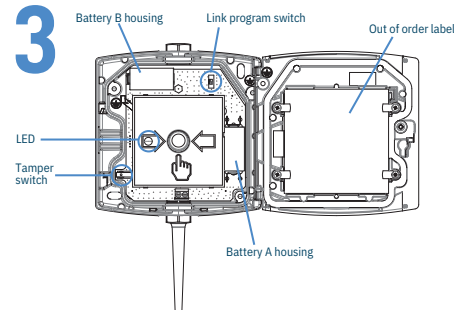
- To open the MCP, rotate the lock door counterclockwise and use the supplied key

2



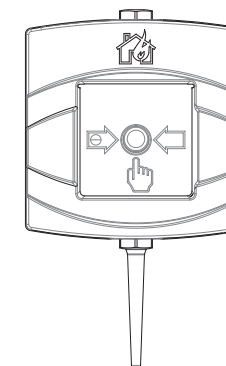
- Locate the mounting holes on the back box and mark them using a pencil on the desired surface you are drilling.
- Using a suitable-sized drill bit (6 mm), drill the marked screw points on your chosen surface.
- Screw the MCP to the wall using the two fixing holes and the supplied screws, dowels and washers.
- Ensure you use the correct fixing for the type of surface you are mounting to.

3



- Ensure the programming switch on the MCP is in position 1.
- Fit the 2x CR123A batteries ensuring you have checked they are the correct way round observing the polarity indications.
- Observe the LED status on the front of the MCP: it will blink alternately green / red 4 times.
- Remove the "Out of order" label

4



- Close the MCP
- Put the QR code available in the box either on the system map or on the dedicated pages at the end of Translator or Expander manual.

For more information, please refer to the complete product manual.