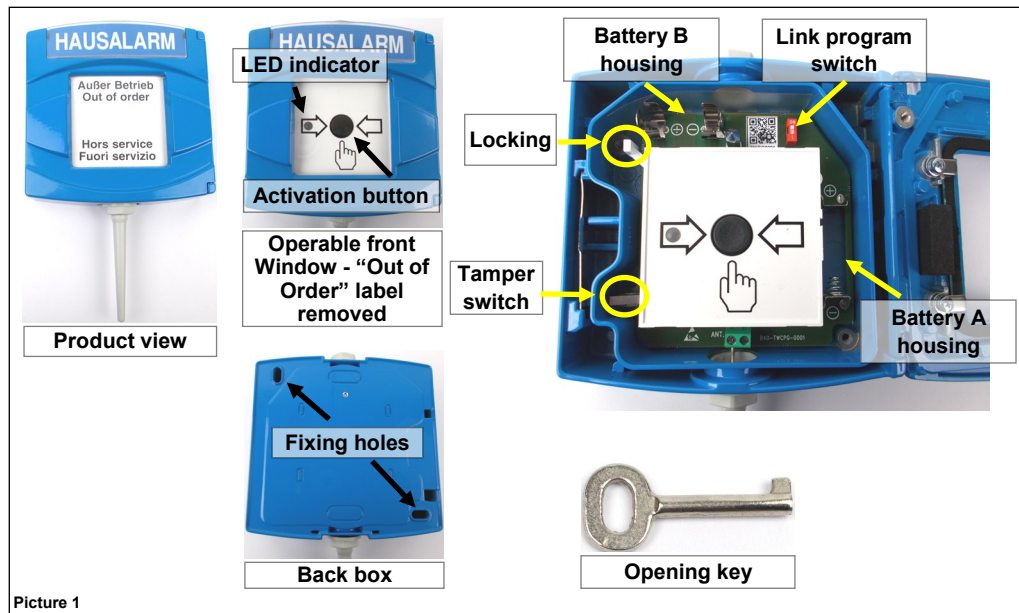




GENERAL DESCRIPTION

The **TW-CP-RB-01/B** / **TW-CPW-RB-01/B** call point permits the manual activation of a fire alarm.
The **TW-CP-RB-01/B** / **TW-CPW-RB-01/B** is battery powered and doesn't need any system cabling installation.
The **TW-CP-RB-01/B** / **TW-CPW-RB-01/B** is in compliance with Fire alarm systems in accordance with **DIN VDE V 0826-2**.



Picture 1

DEPLOYMENT PROCEDURE

- 1) Select a location for the call point. See **LOCATION SELECTION**.
- 2) Unbox the call point from its packaging.
- 3) Power up the call point. See **POWERING UP - FIRST TIME USE / POWERING UP - RECOVERY**.
- 4) Link the call point to the system. See **LINKING - WAKE-UP / LINKING - ONE-BY-ONE**.
- 5) Install the device. See **DEVICE INSTALLATION**.
- 6) Test the call point. See **TESTING**.
- 7) Remove the "Out of order" label when the call point is in operation.



! Always remove the "Out of Order" label when the call point comes in operation.

LOCATION SELECTION

Select a location for the call point that conforms to your local applicable safety standards and that is in a good position for sending / receiving wireless signals to / from the **TW-MTI-01**, **TW-MEC-01** or **TW-ME-01** network device.

! It is advisable to use the **TW-SK-01** survey kit to locate a good wireless installation location.

Mount the call point as far as possible from metal objects, metal doors, metal window openings, etc. as well as cable conductors, cables (especially from computers), otherwise the operating distance may greatly drop.
The **TW-CP-RB-01/B** / **TW-CPW-RB-01/B** must NOT be installed near electronic devices and computer equipment that can interfere with its wireless communication quality.

LED INDICATOR STATUS MESSAGES

The LED indicator communicates to the final user the status of the **TW-CP-RB-01/B / TW-CPW-RB-01/B**



Please mind that LED signalling burns out battery power, therefore reducing batteries lifespan.

Device status	LEDs indication
Power up (DIP on "ON")	Blinks red 4 times
Power up (DIP opposite "ON")	Blinks green 4 times
Entering wake-up mode	Blinks alternatively green / red 4 times
Link success (one-by-one)	Blinks green 4 times, then the same pattern again
Link failure (one-by-one)	Enters wake-up mode and signals "Entering wake-up mode" following this failure
Link success (wake-up)	Blinks green 4 times, then same pattern again
Link failure (wake-up)	Blinks green 4 times, then blinks red on once, then blinks alternatively green / red 4 times
Normal condition	LED off (can be programmed so as to blink green every wireless communication)
Alarm activation	Blinks red every 2 seconds
Battery fault	LED off (can be programmed so as to blink amber every 5 seconds)
Tamper fault	LED off
Replaced	Blinks amber 2 times

Table 1

POWERING UP AND LINKING - PRELIMINARY NOTES

TW-CP-RB-01/B / TW-CPW-RB-01/B need to be powered up with the supplied batteries.

Linking is the operation through which **TW-CP-RB-01/B / TW-CPW-RB-01/B** are "wirelessly connected" to a **TW-MTI-01, TW-MEC-01** or **TW-ME-01** Taurus network device.

POWERING UP - FIRST TIME USE

Use this procedure the first time you power up a **TW-CP-RB-01/B / TW-CPW-RB-01/B**.

- 1) Make sure the Link / program switch is set on "ON".
- 2) Insert the two supplied batteries into their device's lodgments.

Ensure that the batteries are installed properly, with their polarities matching the indications on the device.

POWERING UP - DEVICE LINKED TO THE SYSTEM

Use this procedure when a **TW-CP-RB-01/B / TW-CPW-RB-01/B** is successfully linked to its Taurus system and you have to extract one or both batteries (e.g. batteries substitution).

- 1) Reinsert the battery or both batteries into their lodgments.

Do not touch the Link / program switch.

If performing a batteries substitution, use two brand new batteries and substitute both of them.

Ensure that the batteries are installed properly, with their polarities matching the indications on the device.

POWERING UP - RECOVERY

Use this procedure when you fail to link successfully a **TW-CP-RB-01/B / TW-CPW-RB-01/B** or you want to link it again.

- 1) Move alternatively the Link / program switch 5 times.
- 2) Set the Link / program switch on "ON".
- 3) Insert the two supplied batteries into their device's lodgments.

Ensure that the batteries are installed properly, with their polarities matching the indications on the device.

LINKING - WAKE-UP

"Wake-up" linking consists in associating one or more field devices to the Taurus system altogether in a single operation. Wake-up is performed either through the **TauREX** software or the **TW-MTI-01 / TW-MEC-01** keyboard-screen interface; it CANNOT be done through **TW-ME-01** devices.

- 1) Create the "virtual model" of the **TW-CP-RB-01/B / TW-CPW-RB-01/B** either on **TauREX** or on the **TW-MTI-01 / TW-MEC-01**.
- 2) Power-up the call point (either "first time use" or "recovery").
- 3) Set the Link / program switch OPPOSITE to "ON".
- 4) Trigger the wake-up procedure either from **TauREX** or from the **TW-MTI-01 / TW-MEC-01**.
- 5) Wait the end of the "wake-up" linking procedure.
- 6) Check on **TauREX** or from **TW-MTI-01 / TW-MEC-01** for linking success. Consult their user manual.

LINKING - ONE-BY-ONE

"One-by-one" linking consists in associating one field device at a time to the Taurus system. This operation is performed either through the **TauREX** software or the **TW-MTI-01 / TW-MEC-01** keyboard-screen interface; it CANNOT be done through **TW-ME-01** devices.

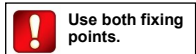
- 1) Create the "virtual model" of the field device either on **TauREX** or on the **TW-MTI-01 / TW-MEC-01**.
- 2) Trigger the linking procedure either from **TauREX** or from the **TW-MTI-01 / TW-MEC-01**.
- 3) Power-up the field device (either "first time use" or "recovery").
- 4) Set the field device's Link / program switch OPPOSITE to "ON".
- 5) Wait the end of the "one-by-one" linking procedure.
- 6) Check on **TauREX** or from **TW-MTI-01 / TW-MEC-01** for linking success. Consult product user manual.

DEVICE INSTALLATION

The two elongated holes on the top left and the bottom right of the back of the housing are intended for the installation - see picture 1

To install the device on the wall:

- 1) Open the door of the housing by means of the key as in picture 2
- 2) Fasten the call point to the wall using the enclosed dowels, washers and screws



Picture 2

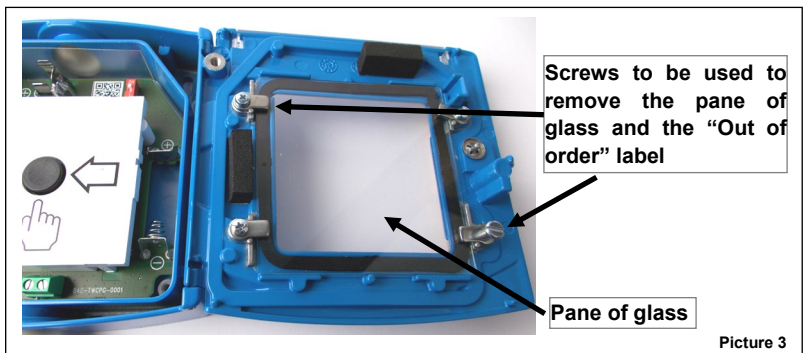
ACTIVATION / REPLACEMENT OF THE PANE OF GLASS

To activate the call point:

- 1) Broke the glass and press the activation button until it locks

To replace the pane of glass:

- 1) Open the door of the housing by means of the key
- 2) Remove and replace the pane of glass



Picture 3

TESTING

1) Open the door of the housing by means of the key (in case of danger, the glass is broken instead of opening the door). Press the activation button until it locks.

LED indicator signals "Alarm activation"; the control panel receives the alarm message.

2) Reset the call point by means of the locking lever and close the door of the housing. **NOTE:** if the call point has been activated, the locking lever prevents the closing of the door when the door is open - see picture 1.

3) Reset the alarm condition of the fire detection control panel and terminate the test condition.

BATTERY FAULTS AND BATTERY SUBSTITUTION PROCEDURE

When one or both batteries are low in charge, a specific fault message is routed to the control panel. If such event occurs:

1) Remove the device block from the back box.

2) Extract both batteries.

3) Insert both new batteries into their holders, oriented as per polarity marks. See **POWERING UP - DEVICE LINKED TO THE SYSTEM.**

4) Reinstall the device block.



Local safety standards may require you to test these devices on a regular basis.



When a low battery condition is indicated, both batteries must be changed altogether.

Batteries must be brand new.

Do not touch the Link program switch.

Ensure that the batteries are installed properly, with their polarities matching the indications on the device.

Specification	Value
Communication range with TW-MTI-01 , TW-MEC-01 or TW-ME-01 network devices	200 m (in open space)
Wireless frequency band	868 MHz
Number of wireless channels	66
Radiated power	14 dBm (25 mW)
Operating temperature range	-10 °C to 55 °C
Maximum humidity (non condensing)	95% RH
Environmental application	TW-CP-RB-01/B - Indoors TW-CPW-RB-01/B - Indoors (Waterproof IP65)
Dimensions	205 mm x 126.5 mm x 35 mm
Weight	453 grams (without batteries)

* See TDS-TWCPG-0001 technical specification document for further technical data.

Table 2

BATTERIES SPECIFICATIONS

Specification	Value
Batteries type	CR123A (3 V, 1.25 Ah)
Batteries lifespan *	10 years
Low battery threshold value (nominal)	2.850 V

* Batteries lifespan depends by environmental conditions, default monitor settings and link quality.

Table 3

WARNINGS AND LIMITATIONS

Our devices use high quality electronic components and plastic materials that are highly resistant to environmental deterioration. However, after 10 years of continuous operation, it is advisable to replace the devices in order to minimize the risk of reduced performance caused by external factors. Ensure that this device is only used with compatible control panels. Detection systems must be checked, serviced and maintained on a regular basis to confirm correct operation. Smoke sensors may respond differently to various kinds of smoke particles, thus application advice should be sought for special risks. Sensors cannot respond correctly if barriers exist between them and the fire location and may be affected by special environmental conditions. Refer to and follow national codes of practice and other internationally recognized fire engineering standards. Appropriate risk assessment should be carried out initially to determine correct design criteria and updated periodically.

Use only in Taurus fire detection and alarm systems.

WARRANTY

All devices are supplied with the benefit of a limited 5 years warranty relating to faulty materials or manufacturing defects, effective from the production date indicated on each product. This warranty is invalidated by mechanical or electrical damage caused in the field by incorrect handling or usage. Product must be returned via your authorized supplier for repair or replacement together with full information on any problem identified. Full details on our warranty and product's returns policy can be obtained upon request.



0051

24

TU1910CPR

ARGUS SECURITY S.R.L.
Via del Canneto, 14
34015 Muggia (TS)
Italy

TW-CP-RB-01/B
TW-CPW-RB-01/B

* EN 54-11:2001+A1:2005 with the exception of paragraphs 4.7.2.3 (Colours) and 4.7.3 (Symbols and Lettering)

EN 54-25:2008

Type B